



FMC (Adjacent B-17)

A PROJECT BY



HEAD OFFICE

2nd Floor, Park View Plaza, F-10 Markaz  
Islamabad, 44000 - Pakistan

Tel: +92 51 210 4447, 221 3471, 210 4426

Email: info@redsunassociates.com

www.redsunassociates.com

UAN: 051-111-733-786

Mob: 0333-1518079, 0300-9093800

SITE OFFICE:

0300-9861368

0346-5556094

Brochure Designed & Printed By  
ACROSS Tel: 051 280 6254 - 55  
Mob: 0333 515 0702



FMC (Adjacent B-17)







# WELCOME TO SWISS GARDEN

ULTIMATE  
**BUSINESS**  
DESTINATION

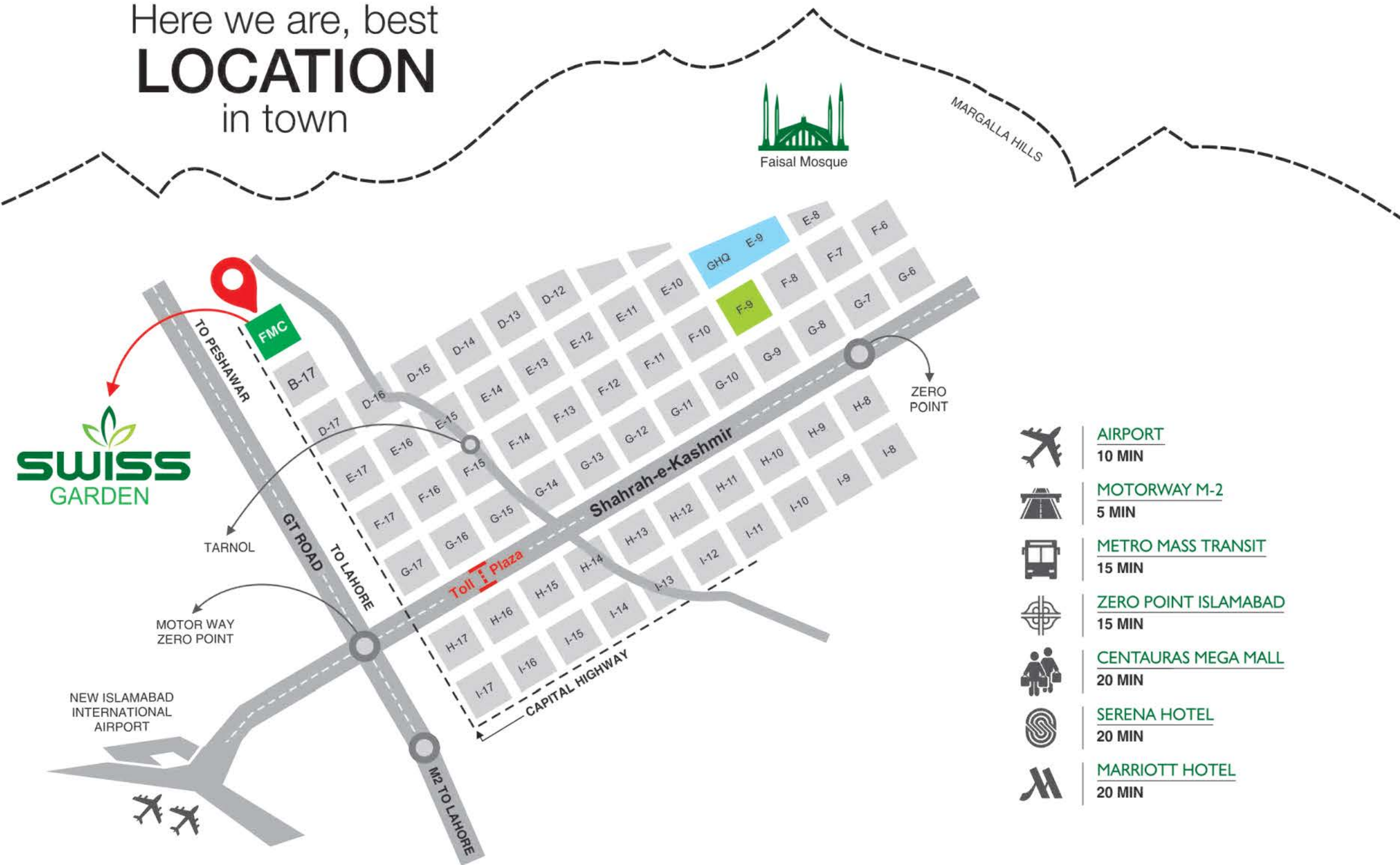


LUXURIOUS  
**LIVING**





Here we are, best  
**LOCATION**  
in town



## FAISAL MARGALLA CITY (FMC)

Faisal Margalla City (FMC) located adjacent to Margalla Hills, surrounded by B-17 Scheme. This housing scheme will have the direct access through main G.T. Road N-5. It is planned to be developed with new lifestyle along with latest innovation of modern living. The aim of the organization is to develop and provide such a housing scheme of international standards which is equipped with modern technologies of living standard in gated community.



Ch. Abdul Majeed  
CEO (FMC)

## MESSAGE

Red Sun Associates is a registered real estate consultant for Faisal Margalla City (FMC), Faisal Town and Multi Professional. Their honesty and professional integrity has earned them a distinctive place in the community. I know their management to be an honest and hard working team and wish them the best in their latest project Swiss Garden in FMC.







WE  
**DELIVER**  
 WHAT WE COMMIT

We have successfully launched and completed a number of residential and commercial projects in Islamabad. This has led to our well earned reputation as a high quality builder who delivers - what we promise, when we promise it. Our completed projects carry a unique blend of elegance, style and comfort and we endeavor to continue our trend of excellence on all future projects.

**ON GOING PROJECTS**



**The Galleria** Bahria Enclave, Islamabad



**The Arch** G-11/3, Islamabad



**The Gate** Faisal Town, Islamabad



**The Galleria** Actual Image



**The Arch** Actual Image



**The Gate** Actual Image

**SOME OF OUR COMPLETED PROJECTS**

**Capital Square**  
 (27 Kanai Mall & Apartments) B-17, Islamabad



**Capital Villas** B-17, Islamabad



**Capital Business Center**  
 Faisal Town, Islamabad



**RED SUN**  
 POLES APART FROM ELSE...

- With unimpeachable track record of project delivery
- Experience and expertise ■ Enthusiastic team of professionals
- Strong capital base ■ High quality international standards of construction
- No compromise on yardstick of quality

**Conviction, commitment, credibility:**  
 the three pillars of morally courageous leadership of RED SUN.



**Swiss Center** D-12, Islamabad



**Crown Business Center** E-11/2, Islamabad



**Islamabad Arcade** D-17, Islamabad



**Irshad Arcade** G-6 Abpara, Islamabad



**Aroog Arcade** F-10, Islamabad



**Tulip Apartments** D-17, Islamabad



**Afzal Center** G-10/1, Islamabad



**Meher Apartments** Front of NUST Uni.



**Madina Arcade** G-13, Islamabad





## SYMBOLIZING INNOVATIVE & CONVENIENCE

A unique blend of affordability and style Red Sun Associates offers a residential and commercial project, where ensuring the customer satisfaction as a top priority goal. Swiss Garden is a project located at prime location in Faisal Margalla City (FMC), Adjacent to B-17 Islamabad. It is a very attractive investment for those who not only want steady rental income but also growth in the value of property.

Apart from an overall sense of freedom and independence the layout of Swiss Garden is free flowing and finishes are cherishing.

Red Sun Associates with its hallmark of an extremely professional approach has carefully deliberated on selecting the best quality construction material and qualified skilled workers. We give our client more than a space to live in or work in. Red Sun Associates aiming to provide a dream home and a business place that will be admired forever.

▪ SHOPS ▪ OFFICES ▪ APARTMENTS







ARCHITECTURE IS  
VISUAL ART  
&  
**SWISS GARDEN**  
IS SELF-EVIDENT







## OUR UNIQUE SELLING POINTS

Swiss Garden has been designed to suit the needs of your living and businesses. It is a magnificent combination of luxury along with safety and security. From the most basic needs to the most modern and sophisticated ones.

- 4 Separate entrances for each block
- Shops, offices and apartments
- 1, 2 & 3 Bed apartments
- Elevators
- Modern architecture
- Earthquake resistant structure
- Beautiful interior and exterior design
- Fire fighting systems
- Kids play area and gaming zone
- Reception
- Separate gas and electric connections
- 24/7 Security system



## BUSINESS OPPORTUNITY AT SWISS GARDEN, A RADICAL NEW IDEA!

Swiss Garden comprises shops, offices and apartments which not only consists of modern day amenities, but includes different sizes and locations suitable for business needs of top quality household names and franchise. offers tremendous future potential for long term value. Shops and offices are exclusively designed with an elegant facade captivating the eyes of the visitors to the area.



SHOPS



BRANDS OUTLET

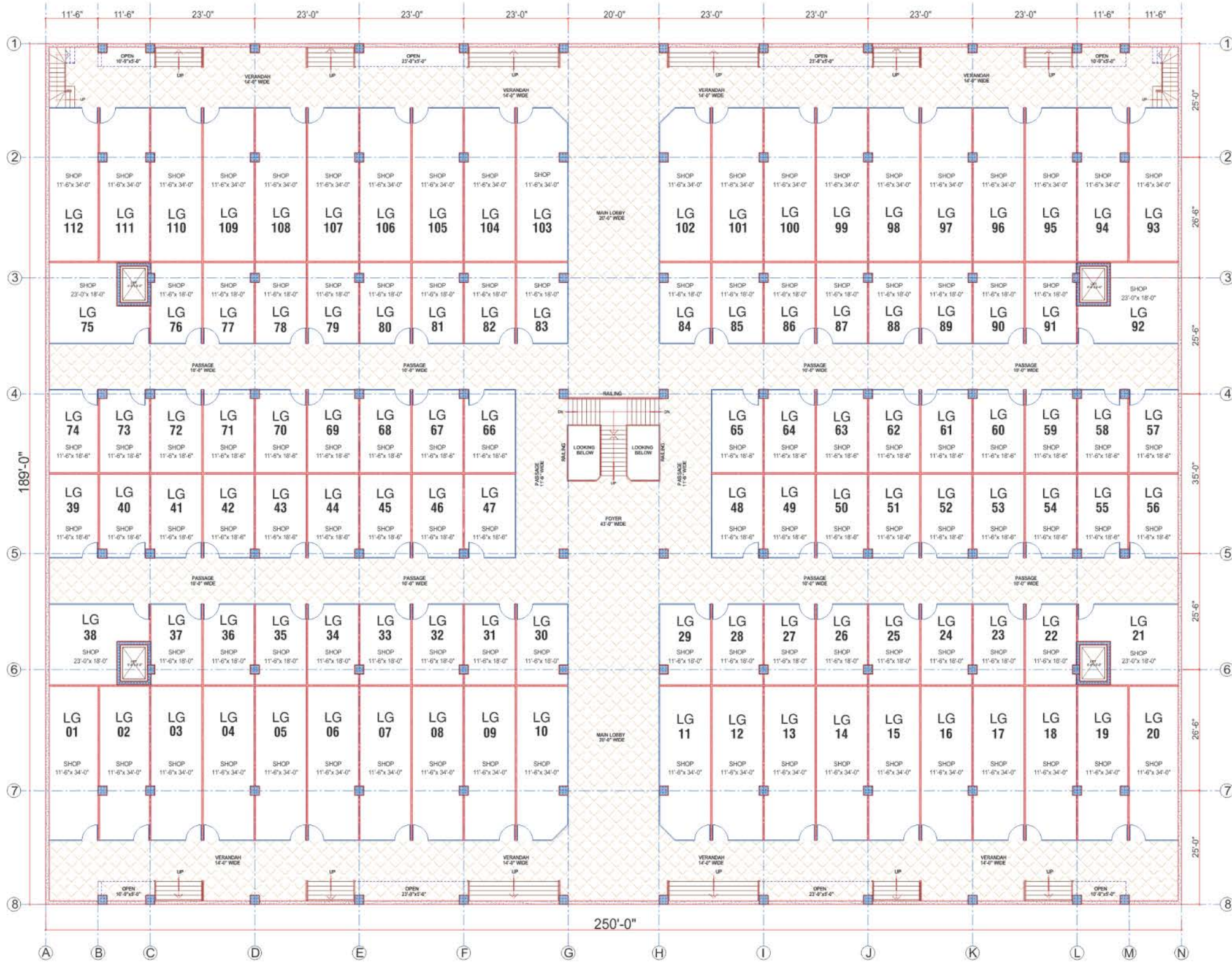


OFFICES





# LOWER GROUND FLOOR PLAN



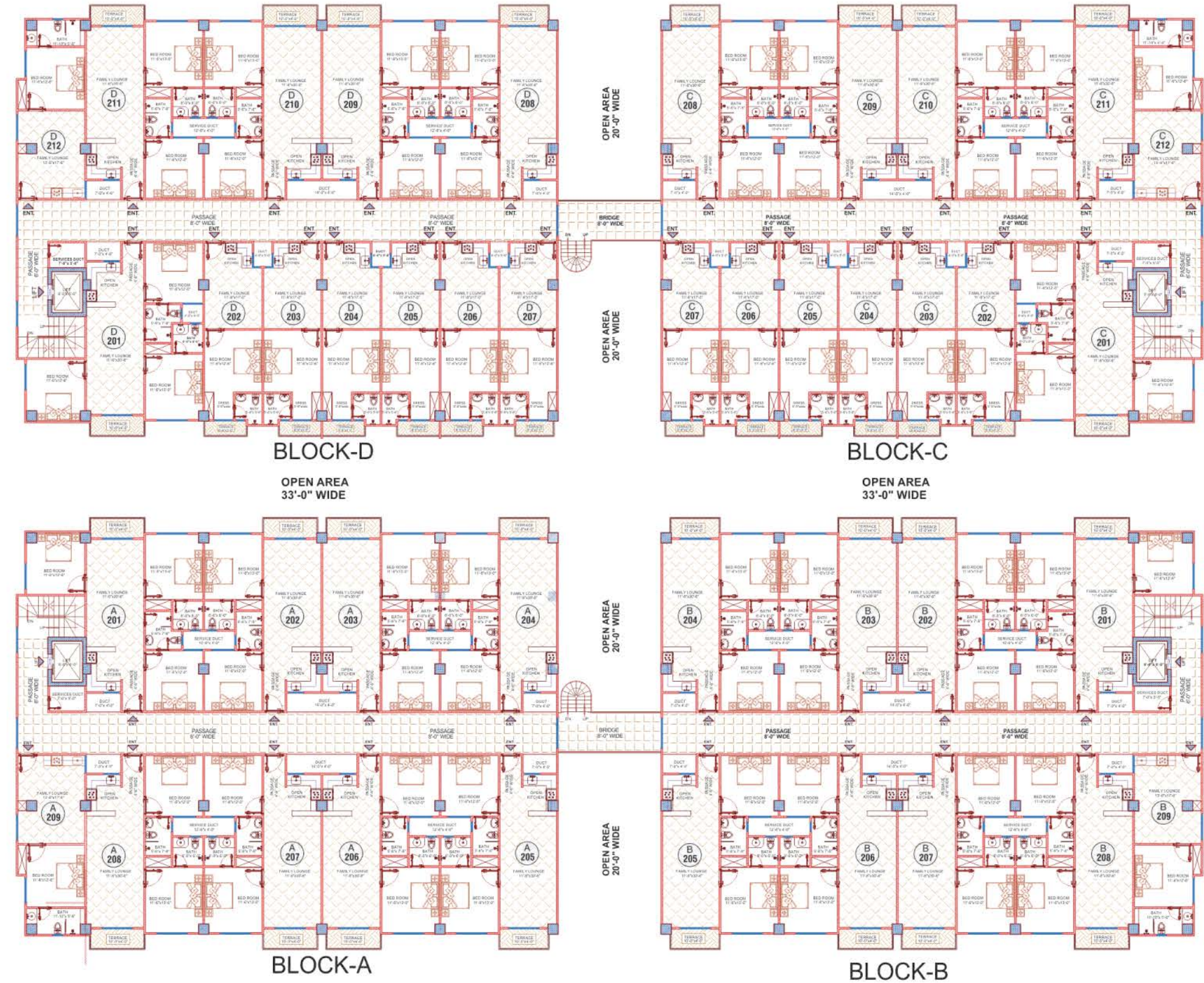
# GROUND FLOOR PLAN







# FIRST FLOOR PLAN



# TYPICAL FLOOR PLAN

2 BEDROOM  
3 BEDROOM  
1 BEDROOM





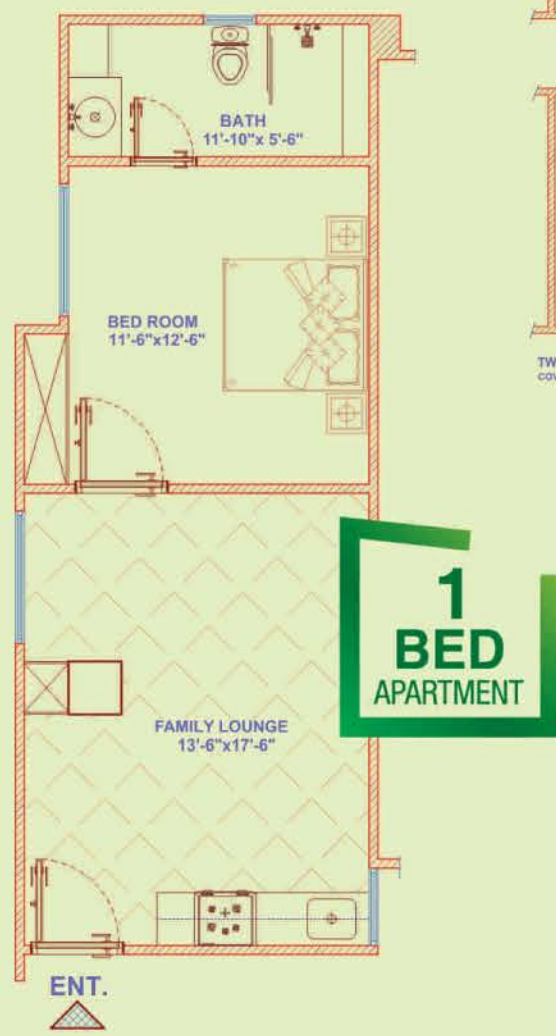


### APARTMENT 3D LAYOUT PLAN



**1 BED APARTMENT**

ONE BED + LOUNGE  
COVERED AREA = 500.00 S.FT.



**1 BED APARTMENT**

ONE BED + LOUNGE  
COVERED AREA = 560.00 S.FT.



**2 BED APARTMENT**

TWO BED + LOUNGE  
COVERED AREA = 545.00 S.FT.



**3 BED APARTMENT**

THREE BED + LOUNGE  
COVERED AREA = 1190.00 S.FT.



BED ROOMS



DRAWING & DINNING



SPACIOUS KITCHEN



SWISS GARDEN DESIGNED FOR A  
**BEAUTIFUL LIVING**  
PERFECTION AT IT'S FINEST!

Swiss Garden provides affordable upscale accommodation to families looking for quality apartments within a self sustaining community with a touch of elegant luxury.

